

1

Login

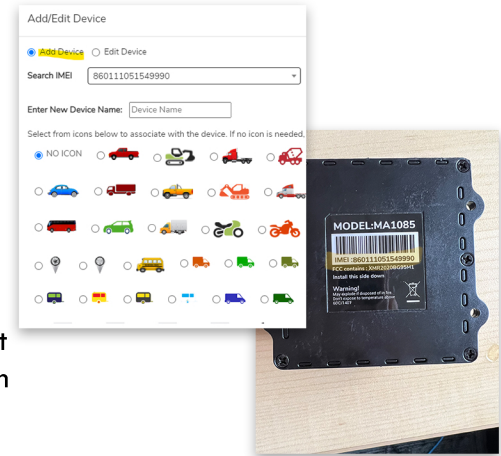
The website is www.gpsandfleet.io. Your username and password were emailed to you from michael@gpsandtrack.com. If you don't see the email please check your spam folder. If you still don't see it, you can call us at **800-578-1809** or email support@gpsandtrack.com

2

Name Your Device

Once logged in you'll need to add your device to see it on the map. Go to Settings> Add/Edit Device> Add Device> Click the Dropdown box next to Search IMEI> Select the IMEI Number that matches the IMEI Number on your Device> Enter New Device Name> Choose an Icon> Click Add Device on bottom right hand corner.

Please note the device may show up in its default location in Kentucky and will say last read 8 years ago with 13.5 Battery. This is all default information. Every brand new device says this before having the button pressed. It may also show an update while in transit. This is normal.



3

Take Device Outside and Press the Test Button

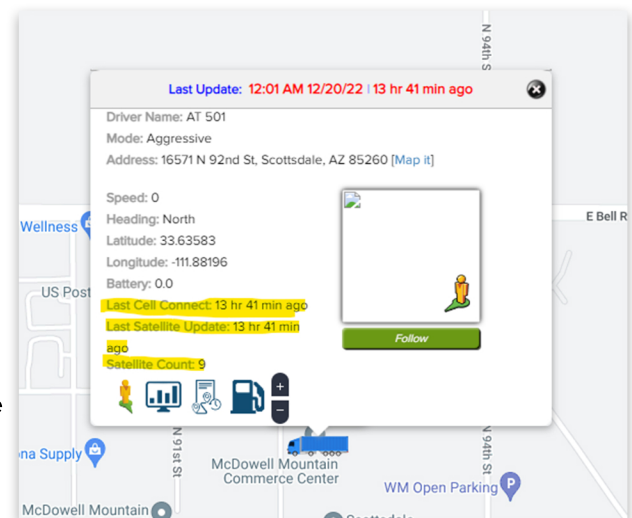
Locate the rectangular glass window on the side of device. Bring the device outside in the open. Hold the test button for 3-5 seconds until you see lights start to flash. Leave the device outside for 10 minutes. After 10 minutes, go back to the website. Refresh the platform by clicking HOME or by refreshing the browser. Your device should update on the map.



4

Test Placement on Asset

Placement of the 2-22 is crucial. It needs to have as much access to the open sky as possible and it cannot be surrounded by metal. The device will read well through fiberglass, plastic, or wood. **DO NOT ENCLOSE IN METAL** Pre-plan your placement, then push the test button and quickly (within seconds) place the tracker in the location you want to keep it. Wait 10 minutes. Refresh the platform. Click the icon of the device you are testing on the map. Or use the search tool on the top right to find your device on the map. A bigger white box will appear. Make sure the Last Cell Connect and Last Satellite Update correspond with your button press. Check the Satellite count. You want this number to be 5 or Higher.



5

Mount Your Device

Your order included a Magnetic Bracket or Bolts depending on your request. If you chose Magnetic Bracket a bracket with four small screws is included. Place the magnetic bracket on the bottom of your device with the 4 Holes facing the Holes of the bottom of the device. Insert the screws on each corner from the top of the device and to secure. This 80 LB magnet is ready to attach to anything magnetic.

If you chose the Bolt option four Bolts along with locknuts and washers are included. Simply drill a hole wherever you are planning to attach this and use the bolts and Locknuts to attach the device from the 4 corner holes. **BE SURE TO TEST SIGNAL BEFORE DRILLING/PERMANENTLY MOUNTING.** If you did not receive your preferred method of attachment please contact your sales rep.

6

Ready to Track!

You are all set! The movement based programming will update whenever the vehicle moves for 20 minutes and stops for 20 minutes. If not moving at all, the device will update automatically everyday at 6AM (PST).

Be Sure to Download our App!

APPLE: GPS-Fleet

ANDROID: GPSandFleet

If you have any questions email us at support@gpsandtrack.com or call **800-578-1809** option 2.